

# LIST OF PARTS AVAILABLE THROUGH N.A.P.A. FOR MB & GPW 134 FLAT HEAD

GASKETS & SEALS	STOCK NO.	MFG
Full Gasket Set	FS 1023 KJ	Victor
Valve Grinding Set (Head Set)	HS 1023 K	"
Head Gasket	1023 K	"
Oil Pan Gasket	OS 30656	"
Valve Cover Gasket	VS 38055	"
Intake & Exhaust Manifold Set	MS 18632	"
Exhaust Pipe Flange Gasket	F 5360 C	"
Timing Gear Gasket & Seal Set	JV 797	"
Rear Main Bearing Seal	JV 687	"
Water Pump Gasket	K 26226	"
Fuel Pump Gasket	D 27094	"
PVC Crankcase Cover Gasket	730-9506	B/K
Seal Timing Gear Cover	49575	NAPA Seals
Pinion Seal (Front & Rear)	49161	" "
Seal Transfer Case Shaft (Front & Rear)	49150	" "
Seal Wheel Bearing (Outer) (Front & Rear)	46002	" "
Seal " " (Inner)	49447	" "
Seal Front & Rear Axle (Inner)	11771	" "
Seal Front, Outer Axle W/Rezzepa Axle	12369	" "
Gasket Fuel Sending Unit	701-1599	B/K
Seal, Sector Shaft	8637	NAPA Seals

ELECTRICAL		
Distributor Cap	AL 70	Echlin
Distributor Rotor	AL 69	"
Distributor Rotor For M38 A-1	AL 166	"
Ignition Points	CS 725 A	"
Ignition Condenser	AL 869	"
Starter Switch	<del>SE</del> ST 27	"
Stop Light Switch	SL 134	"
Ignition Coil (6V)	IC 7	"
Ignition " (12V)	IC 17	"
Ignition Coil (12V) W/Built in Res	IC 14	"
Ignition Coil Resister (12V)	ICR 23	"
Spark Plugs	J-8-C	Champion
Ignition Wire Set (See Below)(Note)	700-172	Belden"
(Note) Cut 90 degree ends Fr cables, Replace with your 90 degree Suppressor)		
Seal Beam Headlights (6V)	4420	GE
Seal Beam " " (12V)	4000	"
Horn (12V)	730-1046	B/K
Starter Drive	656-1044	"
Starter Bushing in Flywheel Hsg	4270	Echlin
Commutator End Bushing (Stamped 4408) on Bush	5285	"
Fuel Gage (Inst Panel) (12V) Must use	701-1203	B/K
Fuel Sending Unit (12V) With Fuel Gage	701-1574	"

ENGINE		
Pistons (Engine)	224-2756	NAPA ENG
Pistons Rings	4007	P/C
Rod Bearings	9955 SB	EB

LIST OF PARTS AVAILABLE THROUGH N.A.P.A. FOR MB & GPW 134 FLAT HEAD

ENGINE CONT'D	STOCK NO.	MFG
Main Bearings	558 M	EB
Cam Bearing	1091 M	"
Valves "Exhaust"	211-1562	NAPA ENG
Valve "Intake"	211-1563	" "
Valve Guides "Intake"	217-3504	" "
Valve Guides "Exhaust"	217-3342	" "
Pressure Plate (Clutch)	CA 5317	NCL
Clutch Disc 8½"	RCF 398	"
Clutch Pilot Bushing	615-1016	B/K
Flywheel Ring Gear (97 teeth)	600-3004	"
Head Bolts (L Head Engine)	600-1636	"
Head Bolts (F Head Engine)	600-1637	"
Fan Belt	25-22425	NAPA BELTS
Oil Filter	1100	" Filters
Oil Line (Filter To Timing Gear Cover)	11486	Weatherhead
Oil Line (Motor To Filter)	11478	" "
Freeze Plug (1½")	219-1011	NAPA ENGINE
Motor Mounts (Front)(2 Required)	602-1020	B/K
Paint (Engine Gray)	DE 1611	NAPA

BRAKES		
Master Cyl (No Mnt Holes Threaded)	2796	United
Master Cyl (One Hole Threaded)	6086	"
Master Cyl Repair Kit	137	"
Front Wheel Cyl (Left & Right)	7379	"
Front Wheel Cyl Repair Kit	107	"
Rear Wheel Cyl (Left & Right)	7568	"
Rear Wheel Cyl Repair Kit	127	"
Front Brake Hose (Frame To Axle)	36744	"
Rear Brake Hose (Frame To Axle)	11146	"
Front Wheel Brake Hose (Left & Right)	8553	"
Front Brake Hose Locks (Clips)	80742	"
Brake Shoes (Front & Rear)	TS 76	Rayloc
Master Cyl Copper Washers(2Required)	1#1246 & 1#26444	United

BEARINGS		
Clutch Release Bearing	N 1054	NAPA BRG
Transmission Input Front Shaft Bearing	6207 ZNBRJ	" "
Transmission Rear Shaft Bearing	6307 RSJ	" "
Upper & Lower CV Bearings	11590	Timken
Upper & Lower " " Cups	11520	"
Wheel Brg Inner & Outer (Fnt & Rear)	18590	"
Wheel Brg Cups (Inner & Outer)	18520	"
Transfer Case Main Shaft Bearings	14121	"
Transfer Case Main Shaft " Cups	14276	"
Front Wheel Shifting Bsg Bearing	6206 Z	NAPA BRG
Ring Gear Carrier Bearings	24780	Timken
Ring Gear Carrier " Cups	24721	"

LIST OF PARTS AVAILABLE THROUGH N.A.P.A. FOR MB & GPW 134 FLAT HEAD

BEARINGS, CONT"D	STOCK NO	MFG
Pinion Rear Bearing	31594	Timken
Pinion Rear " Cup	31520	"
Pinion Front Bearing	02872	"
Pinion Front " Cup	02820	"

CHASSIS & WHEEL		
Universal Joint	369	NAPA JNT
Wheel Lug Nuts (Right Hand Threads)	641-2026	B/K
Wheel Lug Nuts (Left Hand Threads)	641-2027	"
Wheel Bolts (Right Hand Threads)	641-1128	"
Wheel Bolts (Left Hand Threads)	641-1129	(Obsolete)
Shocksorbers Front	# 94038	Napa Shocks

SPRINGS		
Spring Bolt Bushing Kit (Fixed End)	274-8106	B/K
Spring Bushing (Fixed End)	274-6040	"

FUEL		
Carburetor Repair Kit (Carter- W0)	2-5144	Echlin
Fuel Pump (F) Head (Comp Fuel & Vac) (new)	M-2846	Rayloc

COOLING SYSTEM		
Water Pump	58-421	Rayloc
Radiator Cap (4 Lbs)	703-1419	B/K
Top Rad Hose 13" # # # #	# 1030	Napa Hose
Lower Rad Hose (Cut out the curve part needed)	7096	" "

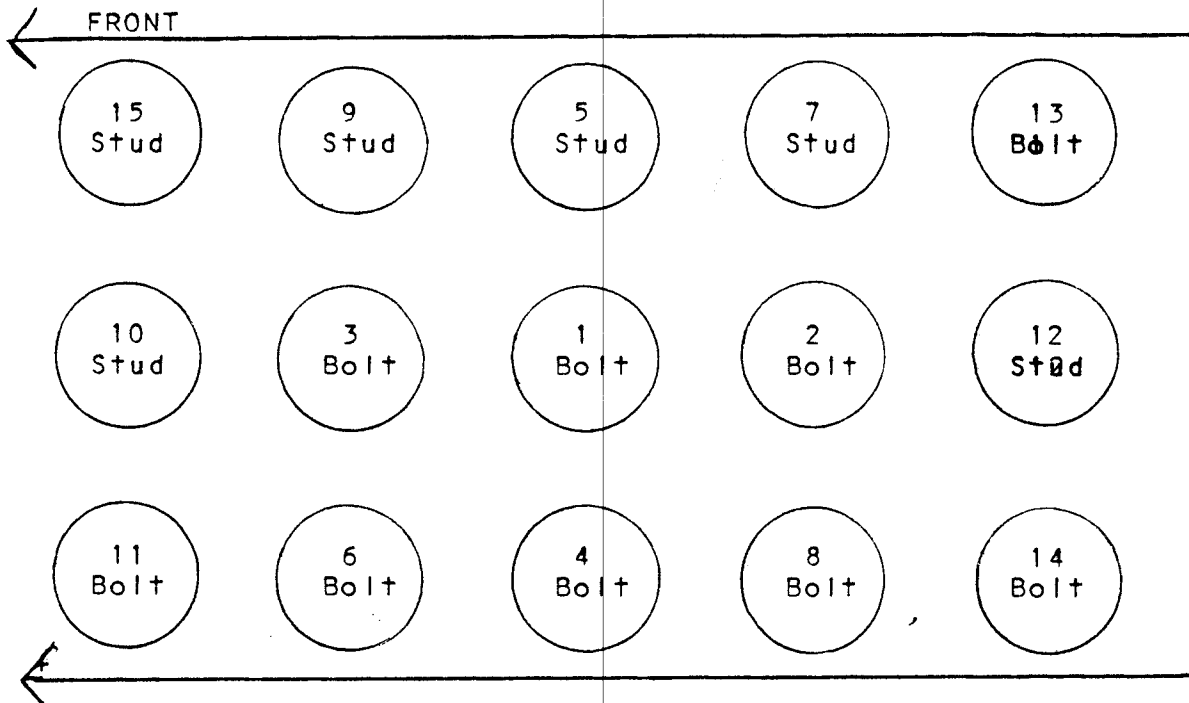
STEERING BELLCRANCK		
Bearing Torrington #B-188 (2) Req	SCE-188 Or SCE-188 PG	NAPA Brg

Prepared By :

Cecil Tanner, Maj. U.S. Army Ordnance Cprp Retired.  
Phone No. (904) 781-7514

# GENERAL INFORMATION & SPECIFICATIONS

## CYLINDER HEAD



NOTE: Bolt & Stud No. indicate the Torque sequence on tightening.  
You have 6 studs & 9 bolts, on the 134 Flat Head.

|||||

NOTE: The Left Front and the Right rear springs have LEFT hand threads that screws into the spring. All others are Right Hand threads.

TORQUE: Head Bolts 70 Ft lbs  
Main Bearings 70-75 Ft lbs  
Rod Bearings 40-45 Ft lbs

Spark Plug Gap .030  
Ign Points .020

### CYLINDER HEAD BOLT & STUD LENGTH

There's 5 studs that are 7/16 X 3-7/16 long.  
" 1 " " is 7/16 X 3-7/8 Which goes in # 12 Fire Wall Gnd Stud.  
There's 9 Bolts That are 7/16 X 2-3/4 long.

Transmission Cap: 3/4 Qts

Transfer Case 1 1/2 Qts

Engine Oil: 5 Qts with oil filter change.